

Cambridge Where Innovation Makes History

Innovate Cambridge Strategy 2025



Thank you to our partners



Thank you from Innovate Cambridge

In October 2024, with your input and support, we launched a 10-year blueprint which describes how we will deliver on our collective ambition to create twice as many science and innovation companies, double the investment Cambridge's start-ups receive and double the rate at which the Cambridge Cluster builds unicorns. We want to thank you for your energy and contributions in the design of this roadmap for the future.

We have now transitioned from strategy development to delivery phase. Over the last 12 months we have secured funding to maintain a small but mighty team, opened The Glasshouse, activated a 500+ member innovation community, delivered a compelling innovation story for Cambridge, gained government endorsement for a national Innovation Hub based in Cambridge, launched The Cambridge Pledge, activated The Cambridge x Manchester Partnership and appointed our Innovation Advisory Council.

Given the current spotlight on Cambridge as the centre point of the UK proposition for economic growth, there has never been a better time to join this effort - Cambridge is ready to deliver for the region and the UK.

We invite you to join us to deliver our co-created vision for innovation-driven growth and ensure pioneering discoveries are successfully translated for local and global impact.

“We want Cambridge to be the best place to make ground-breaking discoveries and translate them into world-changing businesses. We will do this by becoming a more collaborative, inclusive, and sustainable ecosystem to achieve maximum impact in a rapidly changing world.”



Dr Kathryn Chapman
Executive Director



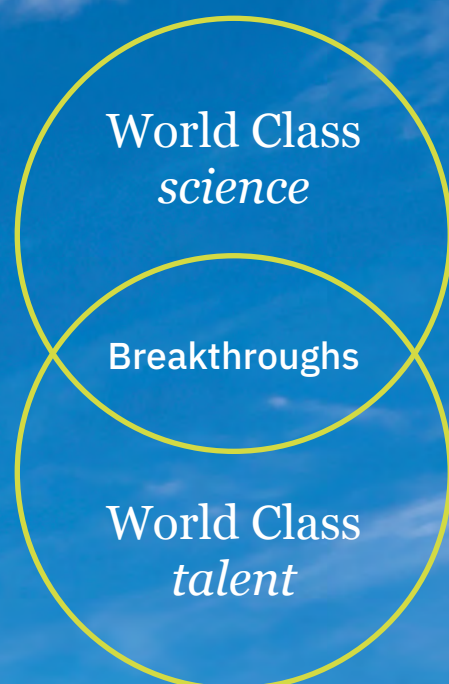
Professor Andy Neely OBE
Chair

About Cambridge

Cambridge is firmly established as a global hub for scientific and technological research, boasting over 5,000 innovation-driven companies, 60 multinationals, 36 research parks, five hospital trusts, two universities and a thriving start-up and investor community.

It was recently named the world's most intensive science and technology cluster by Global Innovation Index for the third consecutive year. University of Cambridge affiliates have won 126 Nobel Prizes and founded many of the UK's most successful science and technology companies, including Arm Holdings, Abcam, Darktrace and Bicycle Therapeutics.

Venture capital investment in Cambridge has surged, hitting almost £1 billion in 2024, solidifying Cambridge's reputation as a breeding ground for the next generation of global technology leaders.



About Innovate Cambridge

Innovate Cambridge is on a mission to accelerate innovation and ensure pioneering discoveries are successfully translated for local and global impact. We have created an aligned innovation vision for Cambridge to strengthen our position on the global stage, creating opportunities in Cambridge and across the UK.

Innovate Cambridge has worked with over 200 organisations to join efforts into a single, powerful engine for growth. We have a mandate and defined workstreams to support innovation activities to deliver more than the sum of their parts. Our focus is on activating a high-impact innovation ecosystem that accelerates growth in the short and medium term, while strategically preparing the ecosystem to fully capitalise on long-term infrastructure investments.

We connect government, academia and business to deliver an aligned innovation strategy for the region.

Our partners are University of Cambridge, Cambridge Innovation Capital, Cambridge Enterprise, Anglia Ruskin University, Cambridge City Council, Judge Business School and Cambridgeshire and Peterborough Combined Authority. Our supporters include Apollo Therapeutics, AstraZeneca, Deloitte, Mishcon de Reya, Railpen, TusPark and Taylor Wessing.



Our vision and blueprint

Our 10 year vision, built in partnership with business, universities and local government and orchestrated by Innovate Cambridge, will build on and accelerate Cambridge's innovation-driven growth, alongside improved social outcomes by 2035. We will supercharge the impact of Cambridge by creating twice as many science and innovation companies, doubling the investment the city's start-ups receive, doubling the rate at which it builds unicorns, while maximising economic and social returns for the region and the UK.

To deliver this, Cambridge is dependent on enablers such as talent, investment, infrastructure and supportive government policy amongst others. The alignment and successful delivery of the innovation blueprint, in combination with the local growth plan, the Cambridge Growth Company and the UK industrial strategy is critical to unlock the potential of Cambridge.

Our blueprint

ensures that Cambridge enables frictionless translation of ground-breaking discoveries into world changing businesses

nurtures people who deliver pioneering discoveries, increasing the diversity of the ecosystem and fostering excellence

enables effective collaboration and partnership with other regions to deliver at the scale and pace needed for the UK

supports the community to lead on sustainable, inclusive and green growth.

[Can't] – [t]
= Cambridge

Our strategy

Our strategy ensures that

our innovation engine is firing on all cylinders, Underpinned by targeted actions and initiatives, the ecosystem will create an ambitious innovation narrative, deliver a world-leading innovation hub, using The Glasshouse* as a pilot, create investable propositions, secure more funding for development of IP and build partnerships with key external stakeholders.

we create value and impact for local community

Everyone around Cambridge should feel empowered by the science on their doorstep and have a sense of ownership over how it can support their lives. To ensure the ecosystem provides value and impact for local community, the ecosystem will deliver The Cambridge Pledge, create a talent hub for skills gaps, job matchmaking and mentorship programmes, and work to develop decarbonisation pathways.

and we form partnerships and collaborations to accelerate progress and scale innovation.

Increasing the ease with which innovators, entrepreneurs, investors, academia and industry can collaborate will be crucial to realise the benefits beyond the geographical limits of Cambridge. To strengthen Cambridge's leading role in the UK's national innovation strategy, the ecosystem will partner with Manchester and other cities to deliver pan-UK innovation partnerships and take a leading role in the Ox-Cam corridor to create regional superclusters.

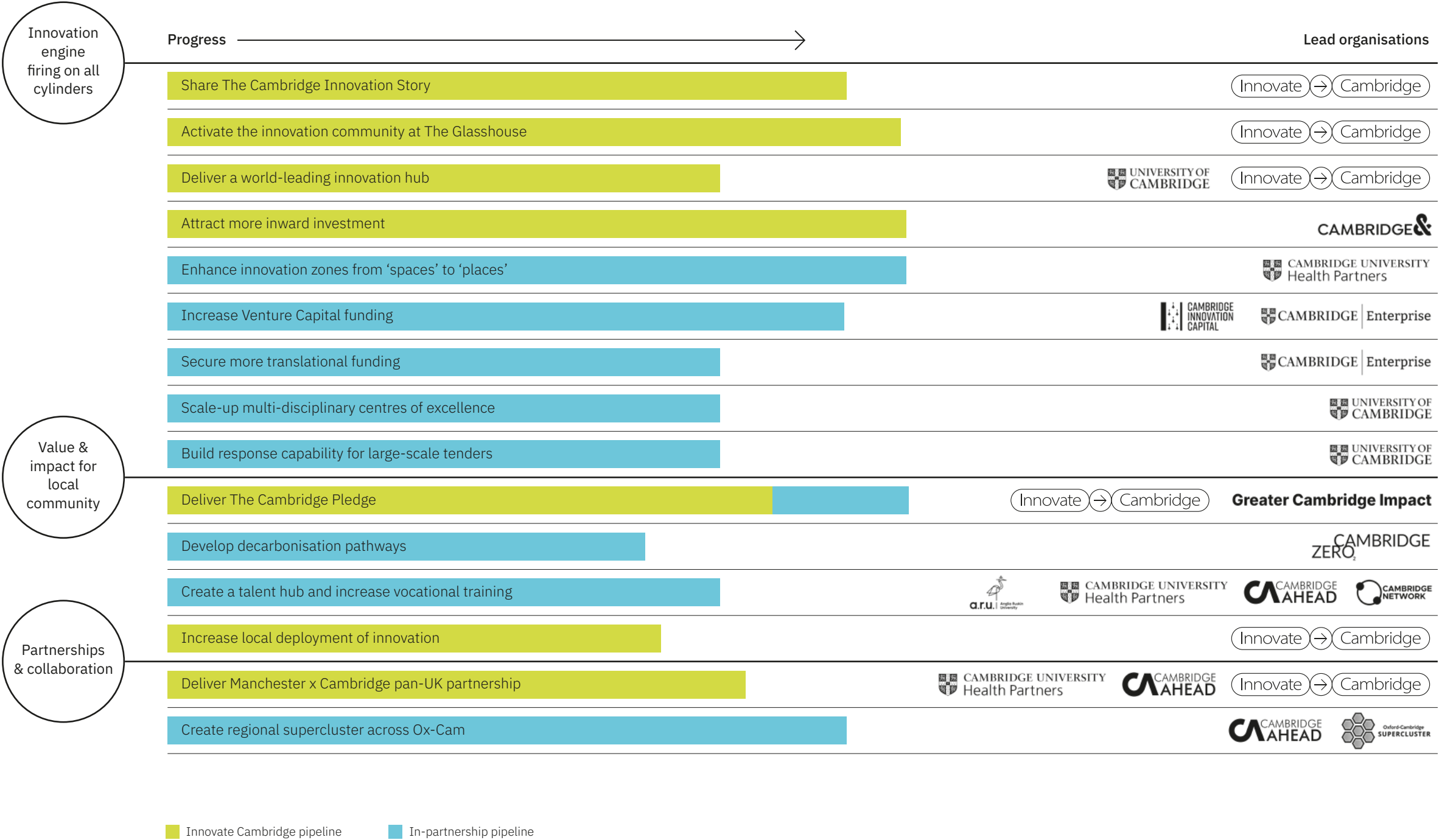
$$\begin{array}{c} \left(\text{World's biggest challenges} \right) \\ \div \\ \left(\text{World's best minds} \right) \\ = \\ \text{Innovation that makes history} \end{array}$$

*The Glasshouse is powered by RAILPEN

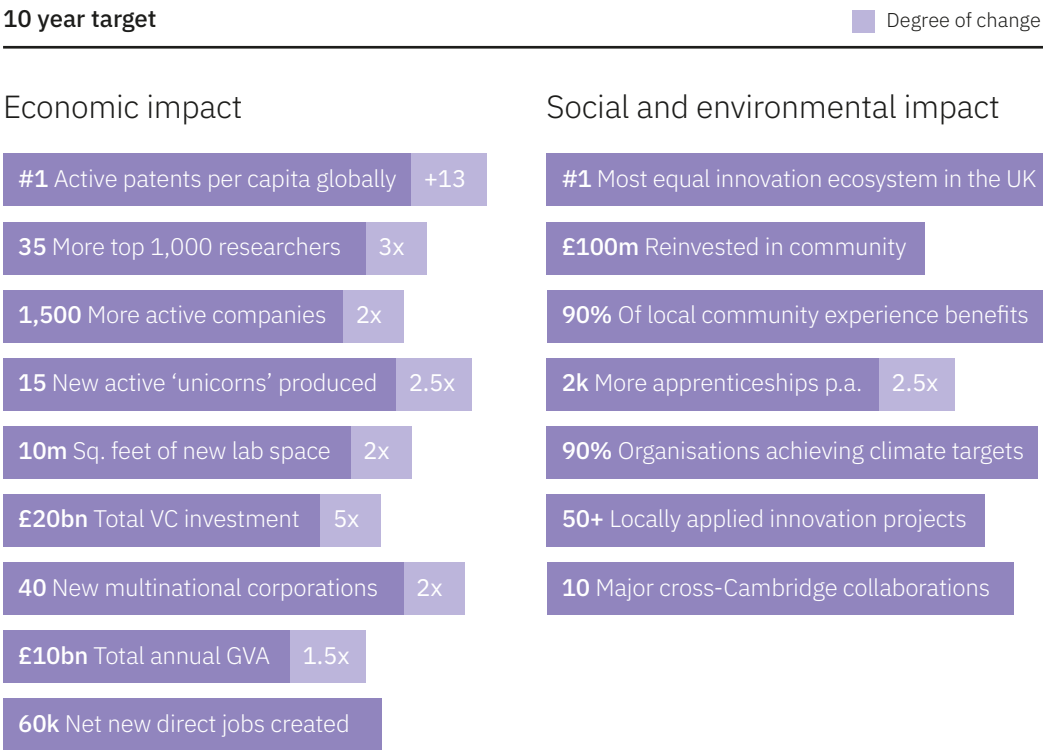
Initiative pipeline

Our innovation strategy highlights the essential interventions and investments needed to unlock economic growth at pace while also enabling the social and economic benefits of growth.

We have benchmarked the Cambridge innovation cluster against other globally leading clusters to define our goals and the levers we will pull to achieve them.

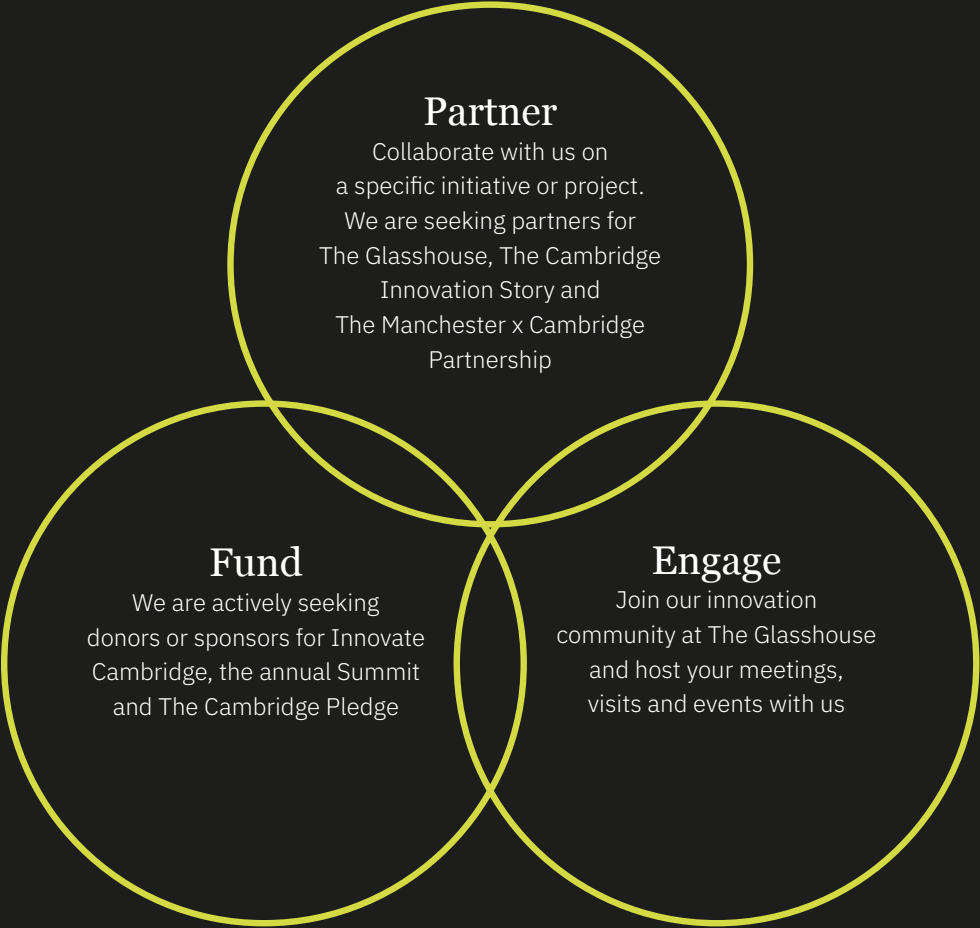


By 2035, the ecosystem can achieve:

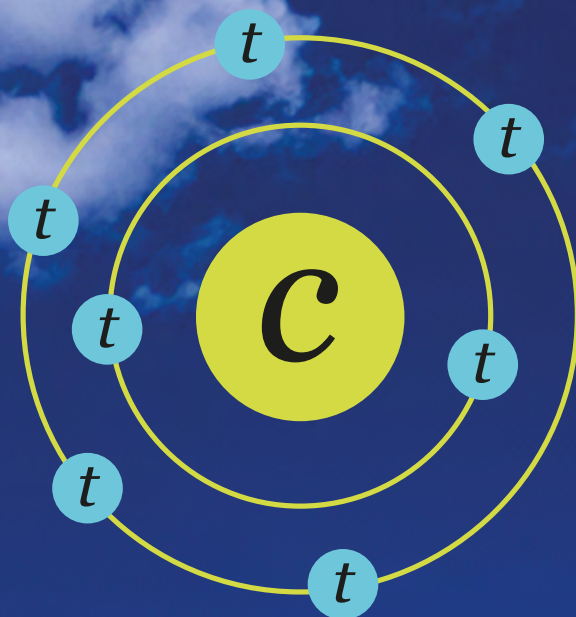


Next steps

It is a collective effort to ensure that the Cambridge innovation ecosystem is functioning effectively, and your support is needed. There are many ways to get involved with Innovate Cambridge and join us in our quest to maintain and strengthen Cambridge's globally leading position.



Get in touch



c = Cambridge
t = Talent

For further information,
please contact the team at:
admin@innovatecambridge.com

If your organisation would like to
become a supporter, please visit:
innovatecambridge.com/supporters